

PRODUCT DATA SHEET

CLIMPING TOOLS FOR NON-INSULATED CORD END TERMINALS



DESCRIPTION

Crimping Tools For Ferrule, is a handheld motion crimping tool for lanyard end ferrule terminals. This ergonomically friendly crimper is designed to provide a consistent and reliable crimp.

FEATURES

- Reduce energy by 50% when spinning.
- Lightweight and compact structure maintains the crimping effect.
- Reproducible and high crimping quality thanks to integrated lock.
- Ergonomic Handle Design provides improved gripping power.
- High quality crimping standard.

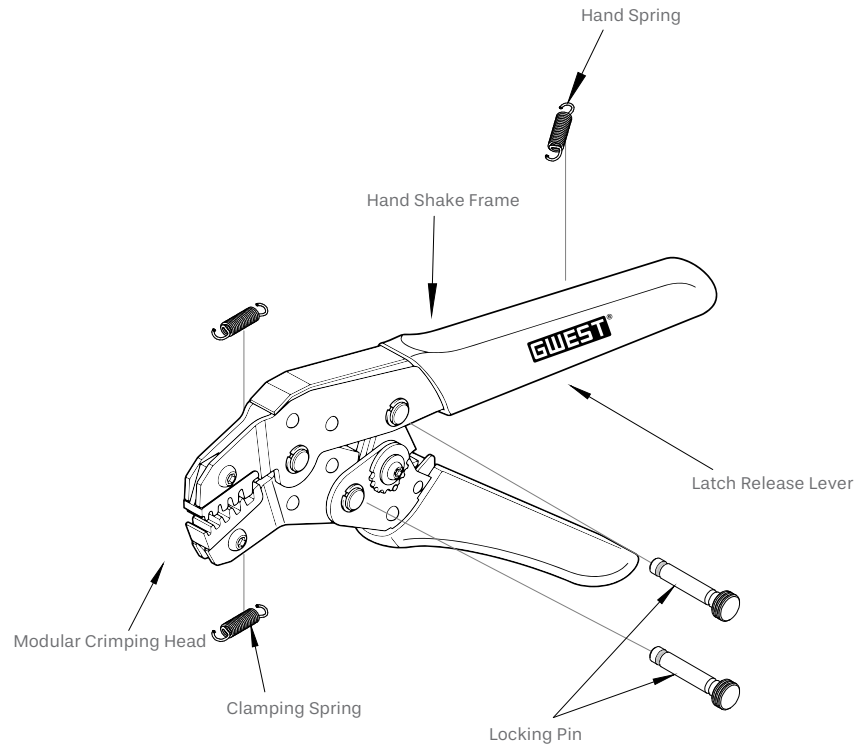
USAGE AREAS



PRODUCT DATA SHEET

CLIMPING TOOLS FOR NON-INSULATED CORD END TERMINALS

SECTIONS AND DIMENSIONS



| PRODUCT CODE | DESCRIPTION |
|--------------|--|
| GW - 12 | 1.00 - 10 mm ² Non-Insulated Terminal Crimping Tool |